

## Typical Applications

These gauges are used where pressure gauges are subjected to severe conditions where pulsation or vibration exists. The filled liquid protects the internal parts against vibrations. Intended to use for gaseous or liquid media that will not obstruct pressure system.

## Standard Features

### Nominal Sizes:

63, 100 and 150mm

### Scale Ranges:

63mm: 0...1.0 to 0...700kg/cm<sup>2</sup>

100,150mm: 0...1.0 to 0...1000kg/cm<sup>2</sup>

### Accuracy Class:

63mm: ±1.6% FSD

100, 150mm: ±1.0% FSD

### Over-Range Protection:

130% of FSD

### Liquid Filling:

Dry or Glycerine Fill

### Enclosure Protection:

IP 55 or IP 65

### Pressure Connection:

Bottom or Back

Threaded Entry

63: 1/8", 1/4" BSP / NPT, 14mm flats

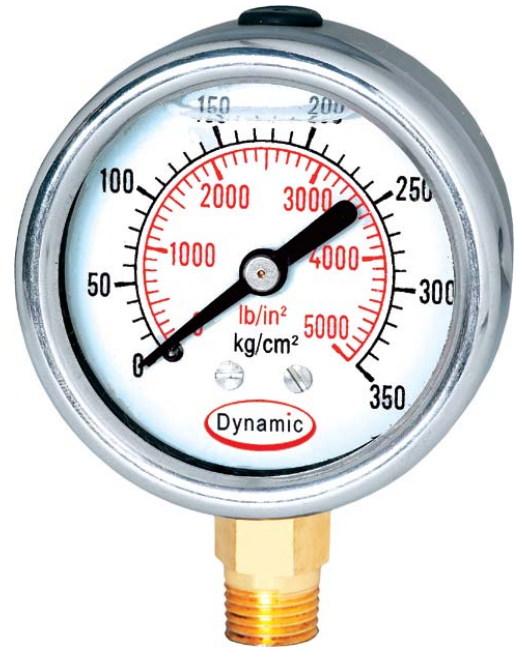
100,150mm: 1/4, 3/8, 1/2" BSP/NPT 22mm flats

### Mounting:

Bottom or Back Mounting

### Special Versions / Optional / Extras:

- + Other Pressure connections
- + 3-Hole surface mounting flange
- + With clamp or Panel (back entry only)
- + SS 316 Case
- + Silicon Oil Fill



### Bourdon Tube (Wetted Part) Material:

Copper Alloy

### Pointer: Aluminium

100, 150mm: Micrometer zero adjustment

### Movement Material:

Copper Alloy

### Pressure Element:

Material: Copper Alloy

≤ 100kg/cm<sup>2</sup>: C-type

> 100kg/cm<sup>2</sup>: Coil type

### Window: 63mm: Clear Acrylic

100, 150mm: Toughened/Safety Glass

### Case Material:

Stainless Steel SS 304

### Bezel Ring:

63mm: Roll formed glossy finish stainless steel

100, 150mm: Snap action bayonet type glossy finished Stainless Steel

### Dial:

White Aluminium with Red & Black lettering

\* Specifications may be modified without prior notice. Please contact & confirm before placing order

# Dynamic Gauges Pvt. Ltd.